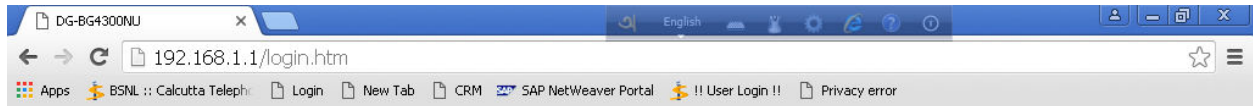


[Click here to download the Patch for DIGISOL Modem](#)

PROCEDURE OF PATCH UPDATION IN DIGISOL MODEM(Model no:DG-BG4300NU ADSL 2/2+)

It is found that in case of DIGISOL modem bearing model no:DG-BG4300NU ADSL 2/2+ some WAN side protocol ports(e.g.FTP,Telnet, SSH, HTTP, SNMP, UPnP including CWMP) are enabled but due to security reasons these ports should be disabled. In order to do the same the patch (image file):”DG-BG4300NU_B2_FW_31MAY2018_BSNL.IMG” to be uploaded under the Firmware Update menu in Maintenance tab(Screenshot attached,Fig:2) after logging into the modem using User name ‘admin’ and password as ‘admin’(Screenshot attached,Fig:1) .It is to be mentioned here that the Firmware Version will remain same as ‘BSNL 2.0.0’ before and after updation of patch. After the firmware updation the login User name will remain same(i.e. admin) but password will get changed to the last 8digit of the modem MAC which is written in the back side of the particular modem. However, modem login password can be changed in the following ways:

- 1)Under the password menu in Maintenance tab , “select” in radio button with User Name as admin
- 2) Put Old Password(last 8 digit of modem MAC), New Password and Confirm Password accordingly and click over Modify tab. Then old password will get changed.(Screenshot attached,Fig:3)



DIGISOL

Router Login

User Name:

Password:

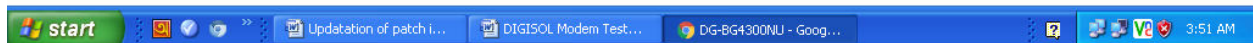


Fig:1

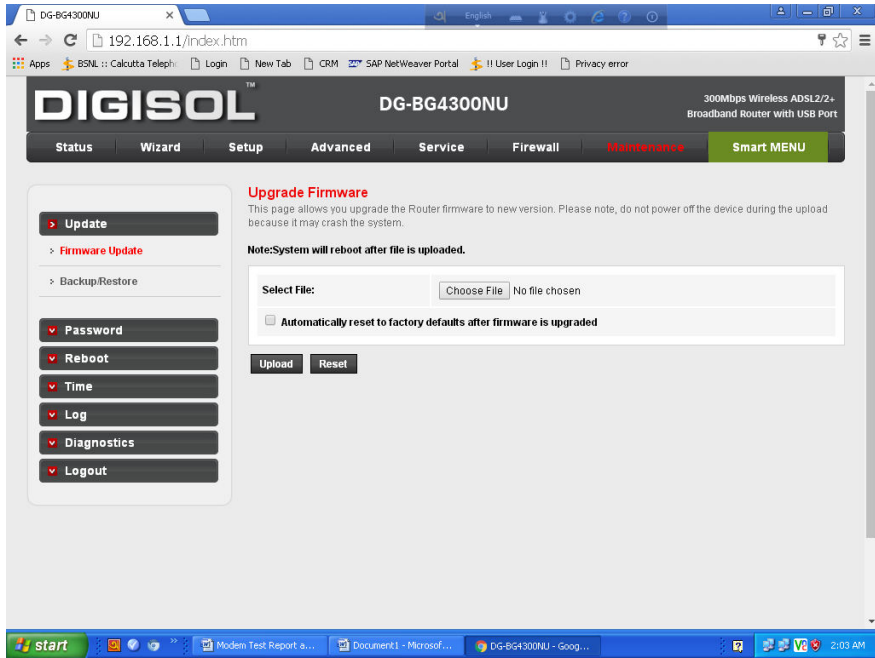


Fig:2

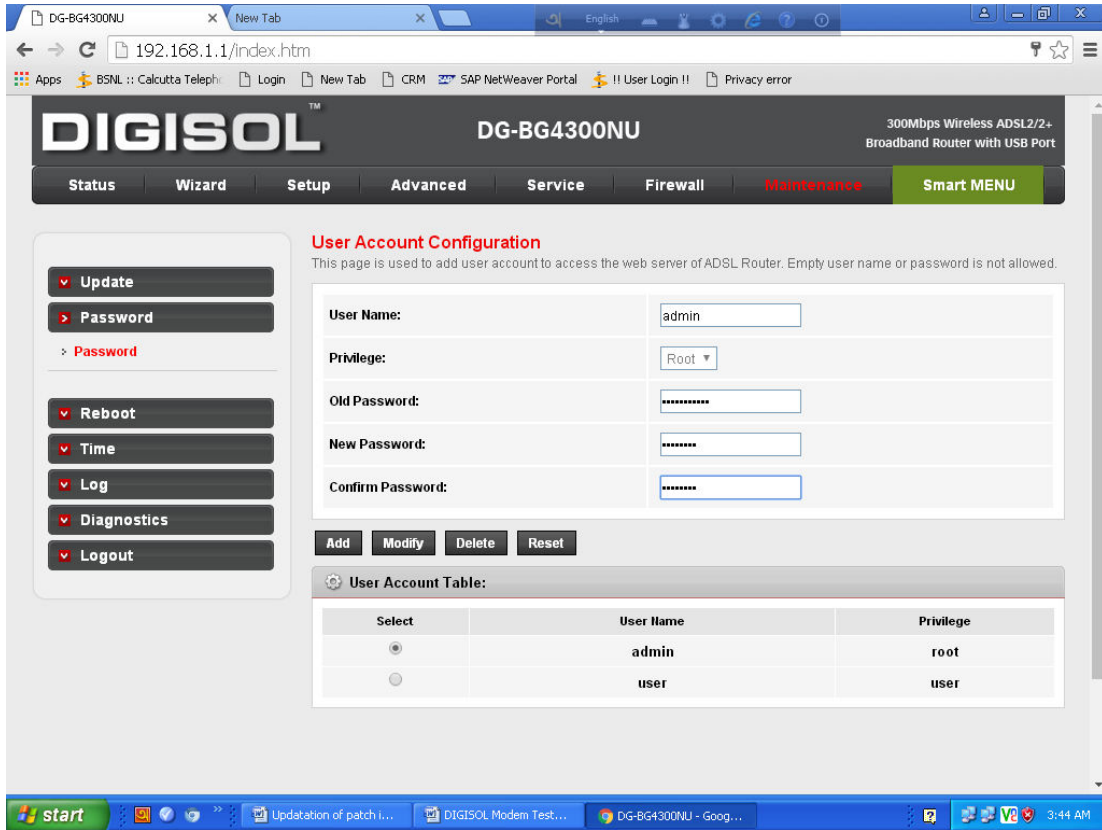


Fig:3

